

# Syndromal XLID Genes

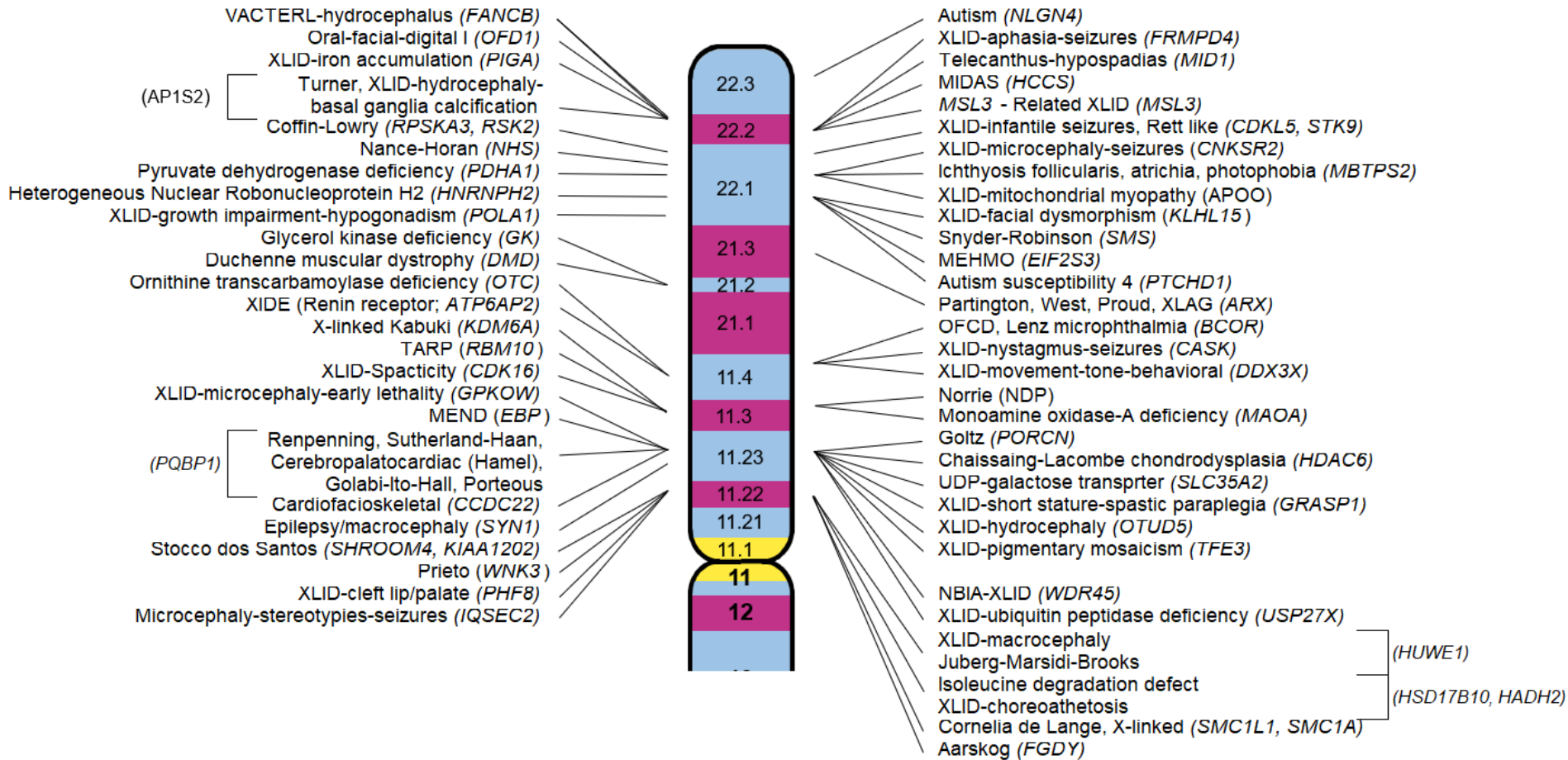
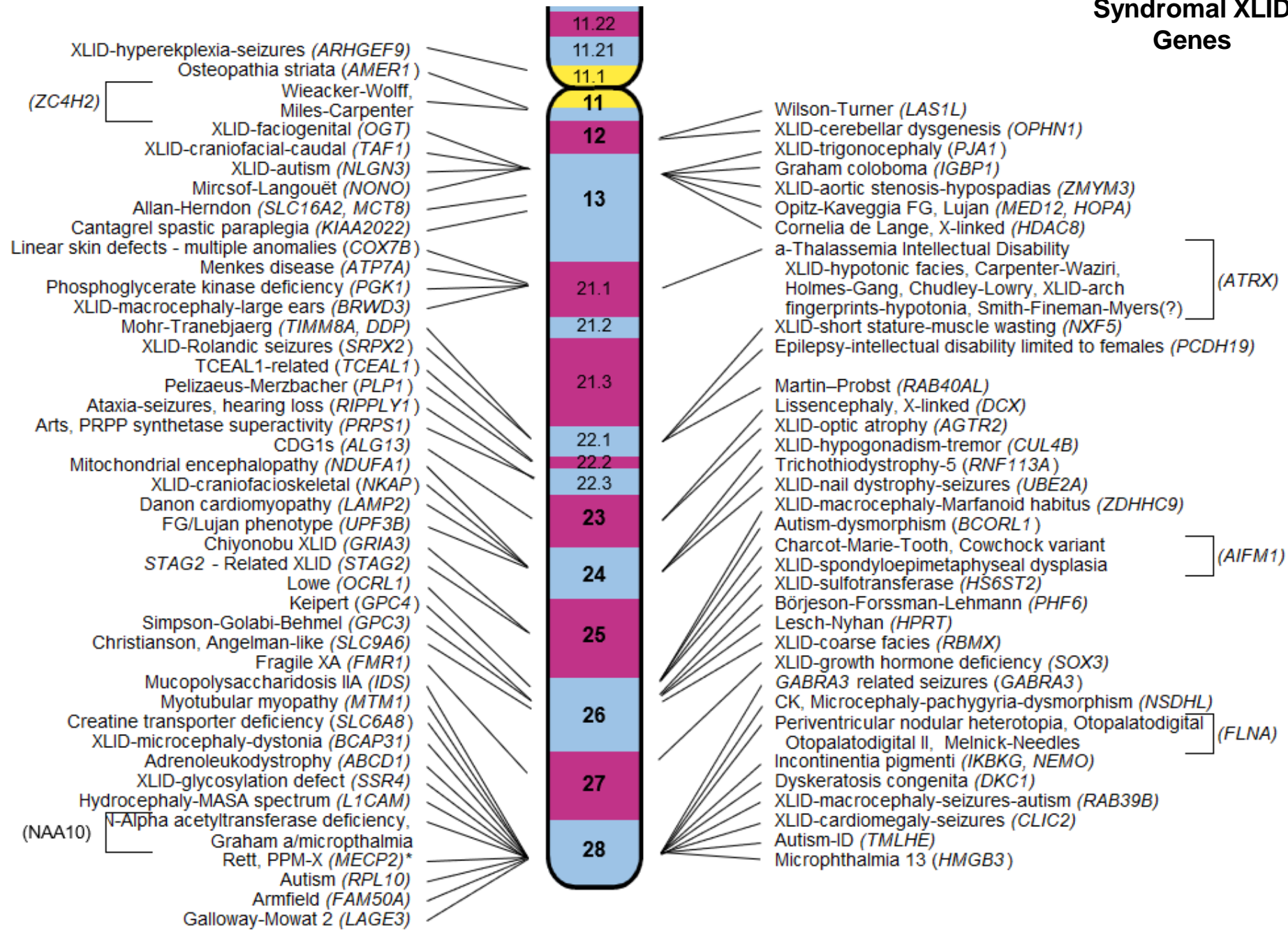


Figure 1A - Greenwood Genetic Center, updated Dec 2022

# Syndromal XLID Genes



\*XLID-hypotonia-recurrent infections (*MECP2* dup)

Figure 1B - Greenwood Genetic Center, updated Dec 2022

## Syndromal and nonsyndromal XLID Genes (Figures 1A, 1B and 3 combined) Bold = syndromal

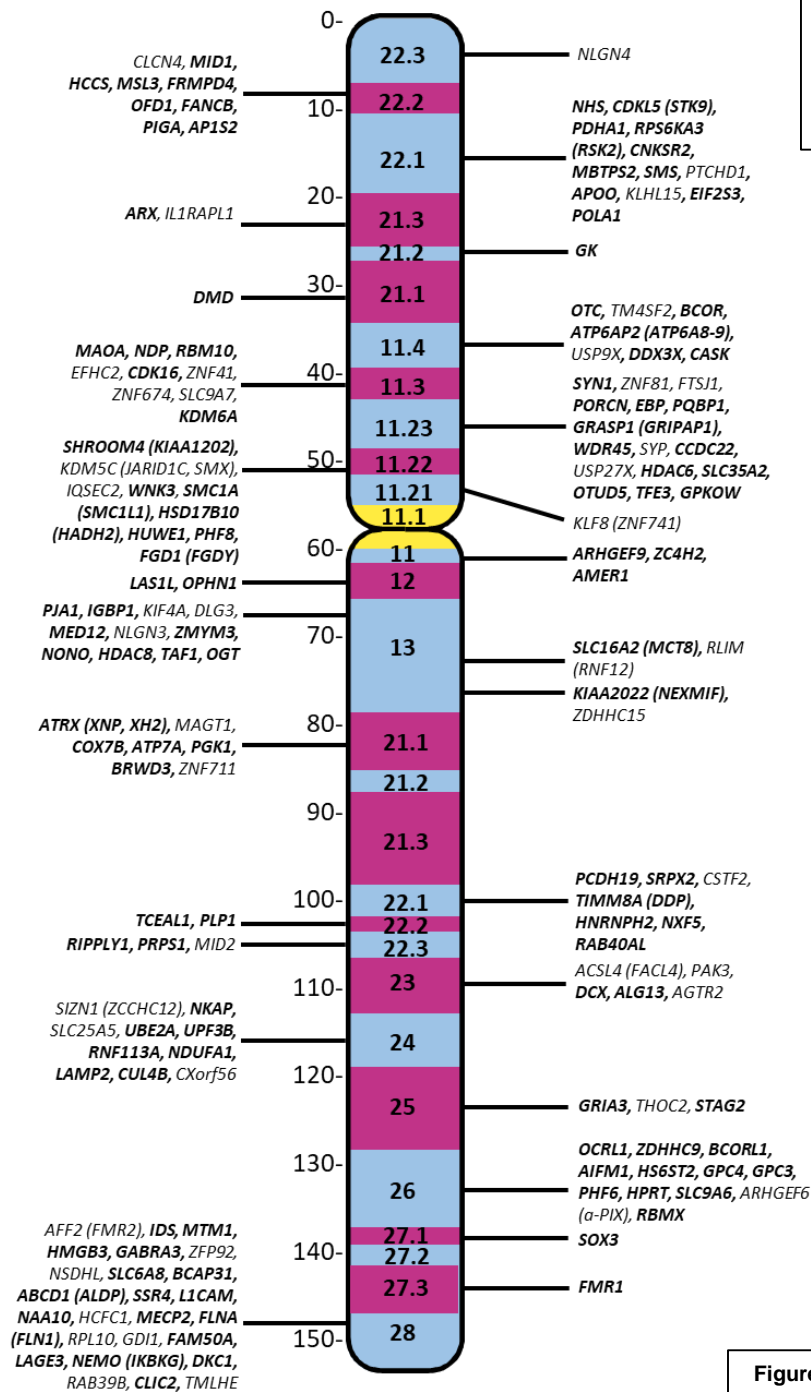
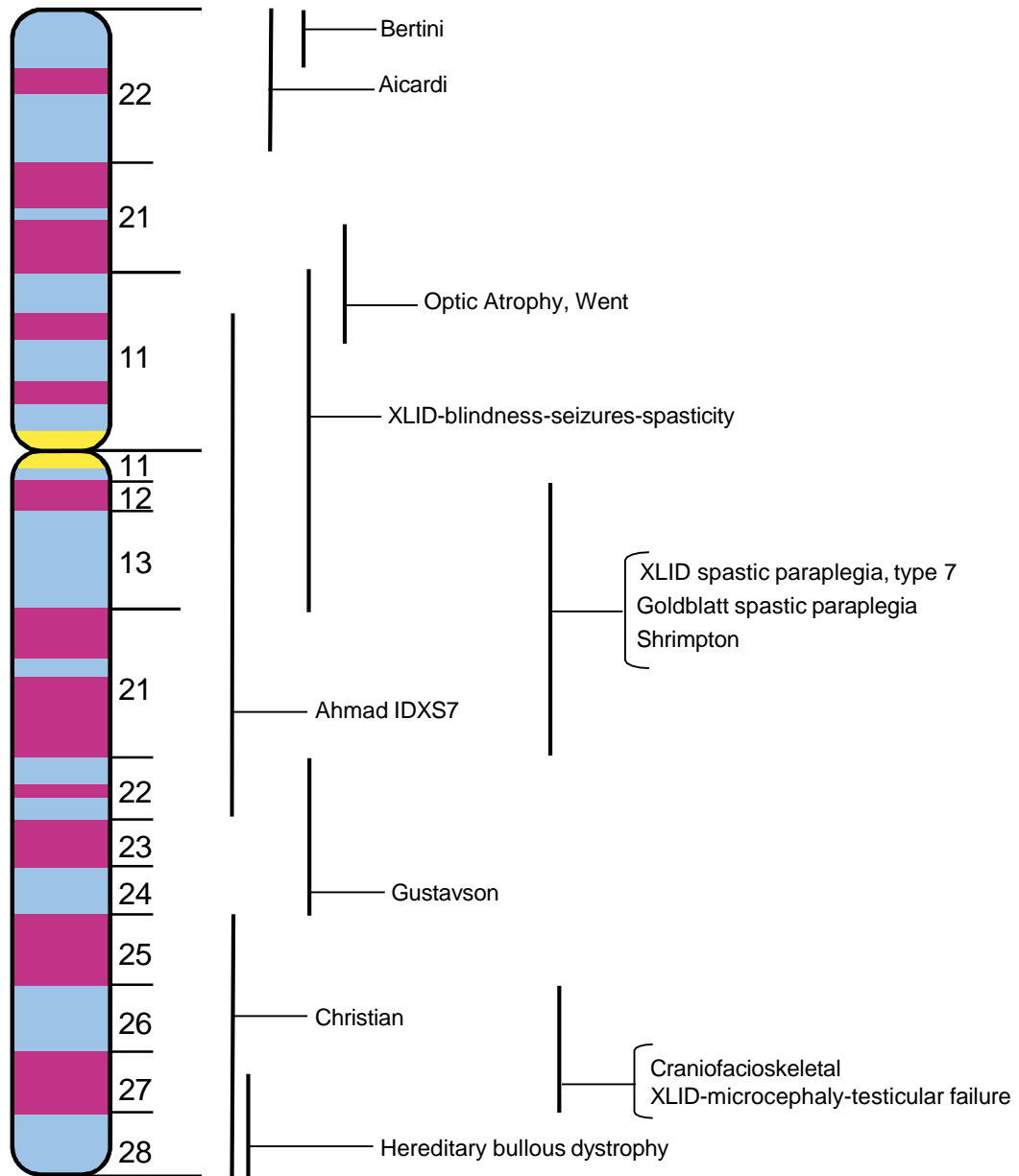


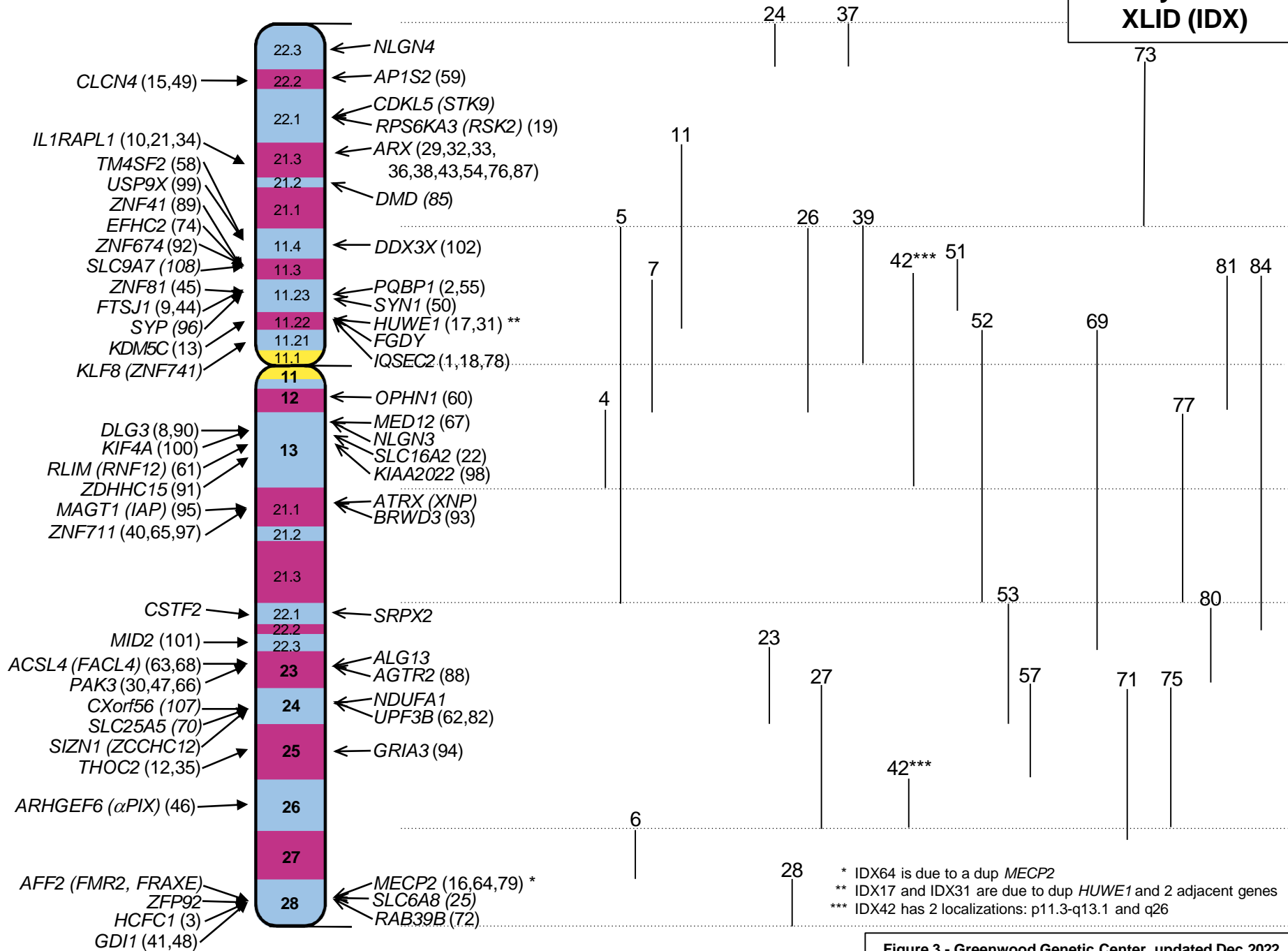
Figure 1C - Greenwood Genetic Center, updated Dec 2022

**Syndromal XLID  
(linkage limits)**



**Figure 2 - Greenwood Genetic Center, updated Dec 2022**

**Nonsyndromal  
XLID (IDX)**



\* IDX64 is due to a dup *MECP2*  
 \*\* IDX17 and IDX31 are due to dup *HUWE1* and 2 adjacent genes  
 \*\*\* IDX42 has 2 localizations: p11.3-q13.1 and q26

**Figure 3 - Greenwood Genetic Center, updated Dec 2022**